

Grand Island, Nebraska

Group Tour Planner's Guide



Bosselman Travel Center
3335 W Wood River Rd • 308-382-2288
Truck stop with diesel and motorcoach service

Airports

Central Nebraska Regional Airport (GRI)
Grand Island • Flights to Dallas, Phoenix, and Las Vegas

Kearney Regional Airport
(45 miles west) • Flights to Chicago and Denver

Lincoln Regional Airport
(90 miles east) • Flights to Atlanta, Chicago, Denver, and Minneapolis

Car Rentals

Budget Rent-A-Car
3215 N Hwy 281 • 308-381-7100 • BudgetNebraska.com

Enterprise Rent-A-Car
920 N Diers Ave • 308-381-6300 • Enterprise.com

Hertz
Airport • 308-384-4741 • Hertz.com

MSAS/A & A Leasing
703 W 2nd • 308-384-3073 • MSASauto.com

Thrifty Car Rental
Airport • 308-382-4392 • ThriftyNE.com

Uber and Lyft
Check apps for availability

Other Transportation

Action Cab & Courier
212 E Capital Ave • 308-381-1010

Arrow/Trailways Bus Lines
3231 Ramada Rd • 308-382-1810

B.I.G. Premier Limousine
NebraskaBigLimos.com • 888-511-5466

Holiday Express Bus
2510 S North Rd • 308-384-1800
Charter motorcoach, limousine and school bus

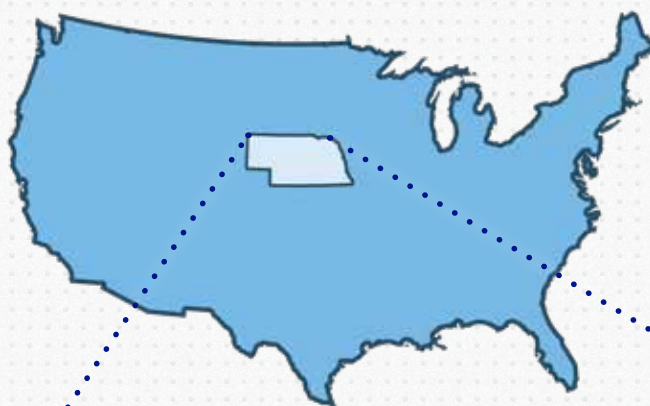
Navigator Airport Express
800-888-9793 • NavigatorAirportExpress.com
Shuttle from Bosselman Travel Plaza to Omaha airport

CRANE Public Transit
308-646-0069
Public shuttle service for Grand Island, Mon-Fri 8am-5pm

Discover Grand Island

as part of your group tour experience. We are excited for you to visit our city! Grand Island's attractions and events will keep you engaged throughout your entire stay.

Transportation and Connectivity



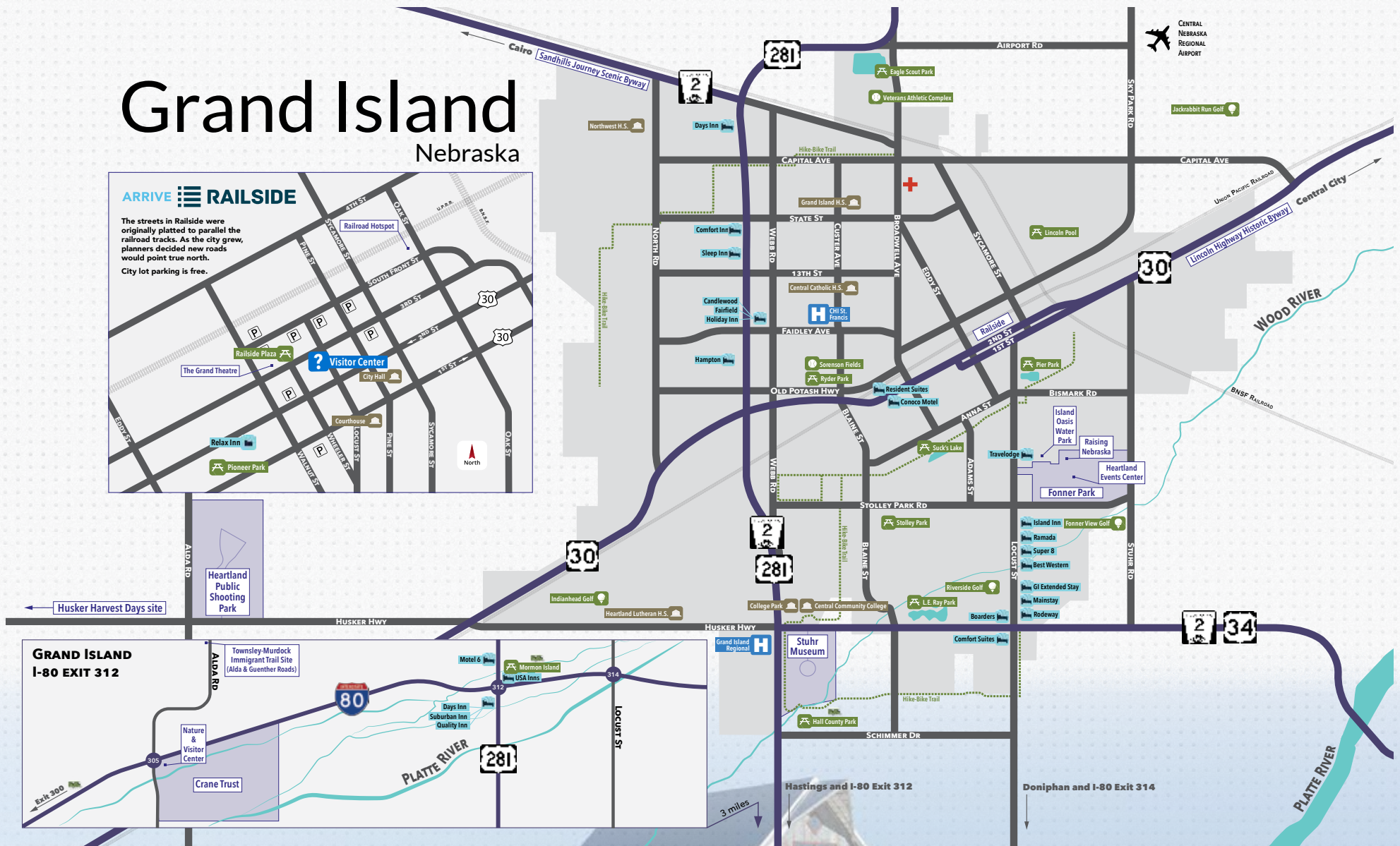
MILEAGE FROM GRAND ISLAND TO

Chicago, IL	599
Dallas, TX	636
Denver, CO	397
Kansas City, MO	287
St Paul, MN	446
Omaha, NE	145
St. Louis, MO	536

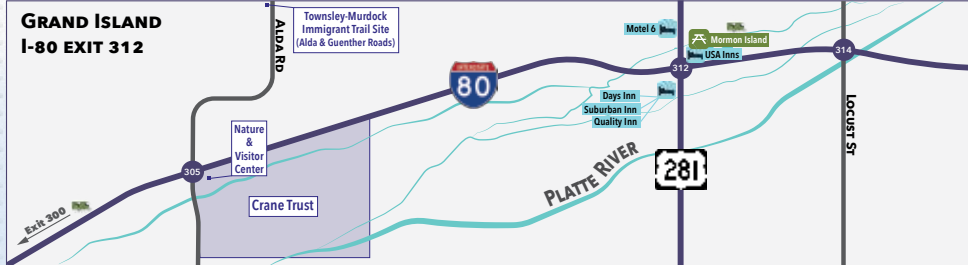


Grand Island

Nebraska



GRAND ISLAND
I-80 EXIT 312



Gjerloff Prairie and education center





Raising Nebraska

VisitGrandIsland.com | 308-382-4400

TOUR: Midwest Ag Showcase

Sample itinerary, with overnight in Grand Island

Day 1

On this tour, you'll hear and see how science and technology have advanced modern agriculture, and impacted us in ways you might not have considered.

Kinkaid Brewing Company, 316 N. Pine, Grand Island
Have dinner at Kinkaid's where the beautiful antique bar is the visual cornerstone of the restaurant. The menu is diverse, as is their own line of craft brews.

Day 2

Raising Nebraska, 501 E. Fonner Park Road
Start the day off with breakfast at Raising Nebraska operated by the University of Nebraska. There, you'll enjoy a farm to table meal and either hands-on activities or a garden tour (seasonal).
Allow 2 hours

Family Farm Experience, Various sites are available in and around Grand Island

Your group will visit a family farm, see operations up close, and talk with the people who use science and technology in modern farming.
Allow 1 hour

Mileta Vista Winery, 1732 Highway 281, St. Paul
Take a short drive up to the edge of the Nebraska Sandhills with a visit to the most established vineyard and winery in the area. There you can sample wines and have lunch. A step-on guide may be added.
Allow 1.5-2 hours

AGI (a global ag products company), 2928 US-30
On this tour, you'll get a look into what it takes to produce one of the most iconic visual elements on a farm. AGI's Grand Island plant focuses on manufacturing grain bins and the mechanical elements that make them work.
Allow 1 hour



Harvesting corn



TOUR: Spring Migration

Sample itinerary, with overnight in Grand Island

The magnificence of sandhill crane migration can only be experienced here, in the central Platte River valley.

Day 1

Stuhr Museum, 3133 W. U.S. Hwy 34

Start your migration experience with the Wings Over the Platte art exhibit and lunch at Stuhr Museum. While there, you can watch videos about the crane migration and take part in behind the scenes tours of the museum. Allow 2-2.5 hours

Driving Tour

Next, you'll hit the road with a local guide who will take you through areas where the sandhill cranes feed during the day. You may catch them dancing to impress their future mate or get a glimpse of an endangered whooping crane.

Allow 1 hour

Crane Trust Nature and Visitor's Center,
9325 S Alda Rd, Wood River

At the Crane Trust, learn how conservation efforts help make this a preferred resting spot for the sandhill crane as well as the endangered whooping crane. At dusk, an up close view of the cranes will be the highlight of your visit. From viewing blinds on the river, you'll see and hear the birds fly in for their overnight stay. Warm clothes, binoculars and a camera should be on your packing list.

Allow 3-3.5 hours

Kinkaid Brewing Company, 316 N. Pine, Grand Island

The evening will be capped off with dinner at Kinkaid Brewing Company, located in a grand old bar. The locally brewed beer and delicious food will make for a great end to the day.

Day 2

The Chocolate Bar, 116 W. 3rd St.

A local story teller, photographer or historian can join you for breakfast and one last experience before you set out for your next destination.

TOUR: Art and Food

Sample itinerary, with overnight in Grand Island

On this tour, you get to try food and beverages, plus see various kinds of art at stops and along the journey.

Day 1

The Chocolate Bar, 116 W. 3rd St.

Have a buffet style lunch, including dessert (of course), and hear from a local artist.

Allow 1- 1.5 hours

Zabuni Specialty Coffee, 220 N. Walnut St.

Zabuni connects Kenyan coffee farmers to roasters. This stop includes a coffee sampling as well as education and a warehouse tour.

Allow 1 hour

Studio 10 Art Gallery, 112 W. 3rd St.

Studio 10 is one of the longest serving galleries in the state. You'll meet the owner and learn how artists are selected.

Allow 30 minutes - 1 hour

Prairie Pride Brewing Company, 115 E. South Front St.

With on site brewing, you can sample as well as see the process it takes to develop new flavors and brews for retail consumption.

Allow 1 hour

La Mexicana Tortilla Factory & Restaurant,

111 E. 4th St.

La Mexicana includes a restaurant, bakery, store, and a tortilla factory that you can tour.

Allow 1 hour

Fred's Flying Circus, 503 E. 4th St.

Fred's Flying Circus is a whimsical, 3D art display viewed from across the street.

Allow 30 minutes (includes video on bus)

Prairie Creek Vineyard and Winery,

1600 16th St, Central City

You'll have supper at Prairie Creek's restaurant, where they can suggest the perfect wine pairing.

Allow 1.5-2 hours

Day 2

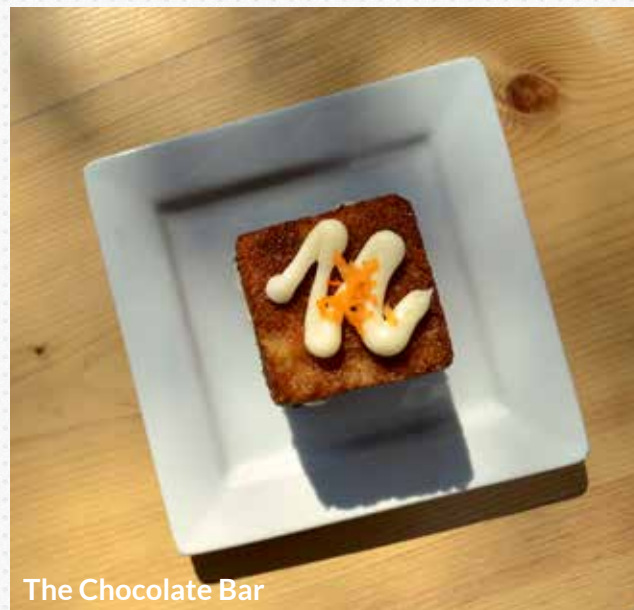
Raising Nebraska, 501 E. Fonner Park Rd.

Sample local sausage, bacon, eggs, honey, mushrooms or milk. Add an art element led by a local artist or one of the Raising Nebraska staff members.

Allow 1-1.5 hours



Zabuni Specialty Coffee



The Chocolate Bar



Fred's Flying Circus



The Liederkrantz German society



Stuhr Museum

TOUR: Settlers, Saints, & Sinners

Sample itinerary, with overnight in Grand Island
(schedule can be easily altered)

Tales from the plains include stories of bravery, intrigue and fortitude.

Day 1

Liederkrantz, 401 W. 1st St.

Step back in time when you visit the original German bar from the early 1900s, and the retro bowling alley. Have supper and get a historical tour, along with some interesting stories.

1.5 - 2 hours

Day 2

Breakfast at the hotel

Burlington Station, 603 N. Plum

In this restored train station, members of the Historical Society will share treats, and tell stories about the people who settled here and built a community.

Allow 1 hour

Railside Tour, 201 W. 3rd St.

Take a guided walking tour of historic downtown sites. Walk in the footsteps of those who visited and those who made this island on the prairie their home. The Railside district is on the National Register of Historic Places and sits on the Lincoln Highway.

Allow 1.5 - hours

Chicken Coop, 120 E. 3rd St.

Enjoy lunch in this historic building which serviced those who brought the rails through the region. Many saints and sinners passed through the doors which have been repurposed into the restaurant's booths.

Allow 1 hour

Driving Tour with Step On Guide

See the sites and hear the stories, as we cross the Lincoln Highway, Pawnee lands and the Oregon and Mormon Trails.

Allow 1 - 1.5 hours

Stuhr Museum of the Prairie Pioneer, 3133 W. Hwy 34

The museum's 200 acres include a town with a working planing mill, tinsmith and blacksmith shop. From late spring to early fall, the town is inhabited by historic interpreters. If time allows, we can add behind the scenes tours of the archive and vast collections building.

Allow 2 hours

EVENT: The Sandhill Cranes

The middle of March is the usual peak of the sandhill crane migration, with bird counts tallying well more than 1 million cranes in the central Platte River valley. The first arrivals generally roost south of Grand Island and Alda, where scientists have documented *the World's largest roost* on Crane Trust property.

Viewing blind tours *March only*

Viewing blind tours offer the chance to view cranes on the river at dawn or dusk. Participants will need to dress warmly and be able to hike up to half a mile on uneven trails to the blinds. Keep in mind the cranes are wildlife, and we can't guarantee what you will see.

Footbridge tours *March only*

These evening tours are handicap accessible and from a bridge over a small channel of the Platte River.

Nature Center tours year-round

These year-round tours can last one hour or more. Visitors will see the butterfly garden, art gallery, bison, and more.

9325 S Alda Rd (Interstate 80 exit 305)
308-382-1820 • CraneTrust.org • info@CraneTrust.org



Crane Trust Nature Center, Platte River Photography



Sandhill cranes' spring migration



The StuhrBuilding

PLACE: Stuhr Museum

Praised as the “best preserved pioneer town” (*True West*), Stuhr Museum tells the story of early pioneers settling on the plains. Its 200 acres offer spectacular architecture, and a recreated railroad town staffed by historic interpreters during the summer and holidays. You can also see Native American displays, vintage vehicles, and much more. Call for hours and admission, which vary with the season and special events.

Railroad Town

This recreated pioneer community features working trades including a planing mill, blacksmith, and tinsmith. Businesses and homes are furnished to reflect the 1890s.

The Stuhr Building

The Stuhr Building was designed by renowned architect Edward Durell Stone, known for designing Radio City Music Hall and the John F. Kennedy Center for the Performing Arts. The Stuhr Building houses history displays,

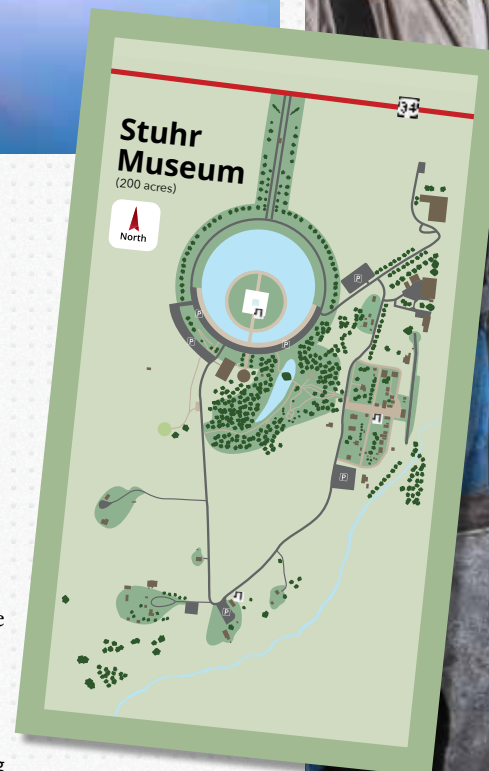
a rotating art gallery, and special exhibits.

Fonner Rotunda

The Fonner Rotunda, designed like a wagon wheel with different spokes separating the exhibits, houses Native American and cowboy exhibits plus items from the Bartenbach Opera House. The beautiful Arrow Maker statue anchors this round structure.

3133 W Highway 34,
Grand Island

308-385-5316 • StuhrMuseum.org
• info@StuhrMuseum.org



Railroad Town

ARRIVE RAILSIDE

The streets in downtown were originally planned to parallel the railroad tracks. As the city grew, planners decided new roads would point true north. All parking is free.

The Grand Theater

Railroad Plaza

Parking P

Taylor St

Madison St

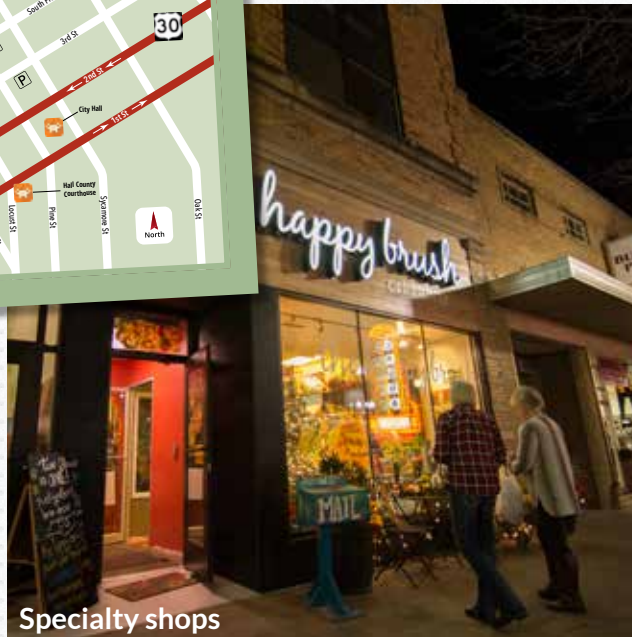
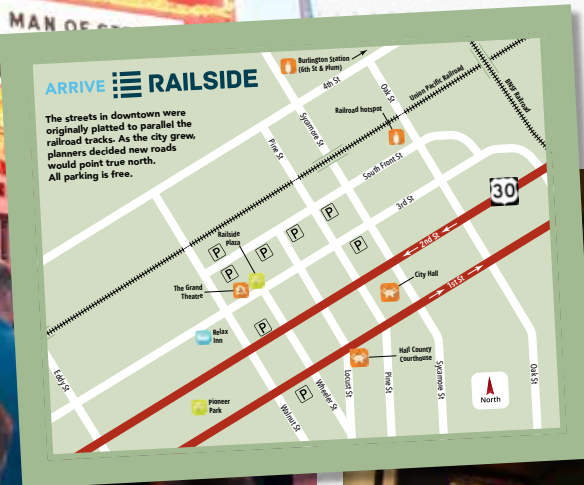
Pioneer Park

Man of Steel

Grand Theater

Prairie Pride and Kinkaid Brewing companies face each other in Railside. Prairie Pride brews on site and serves in their taproom. Kinkaid offers a full restaurant and serves their namesake beers which are brewed 90 miles northwest in the Nebraska

201 W Third St, Grand Island
308-398-7022 • ArriveRailside.com
director@ArriveRailside.com



The Grand Theater

Specialty shops

Kindkaider Brewing Co



Thoroughbred horse racing

PLACE: Fonner Park Campus

Fonner Park plays host to many events throughout the year that are primed to be a part of your tour, including concerts at the Heartland Events Center, the Grand Island Casino, the Nebraska State Fair, and thoroughbred horse racing. Contact Fonner Park to get information on events.

Horse races

The 60+ year tradition continues in Grand Island when the gates open for thoroughbred horse racing every February through May. In the words of their CEO, “Every 22 minutes the place goes berserk!”

Heartland Events Center

The events center features concerts, sure, but also offers a wide variety of other shows throughout the year including a circus, a rodeo, and monster trucks!

Nebraska State Fair

Entertainment and animals. Concerts and street performers. Barbeque, fried foods, and foods on a stick. Cotton Candy and the midway. What are you waiting for?



700 E Stolley Park Rd, Grand Island
308-382-4515 • FonnerPark.com • dwilley@FonnerPark.com



Nebraska State Fair

Restaurants for groups

Food is an important part of any vacation. A good meal can create an ultimately positive memory tied to an experience or place. Grand Island has dining experiences that can accommodate big groups while serving delicious foods in unique atmospheres.

The Chicken Coop

A historic space offering local beer — they brew their own root beer — and great food from pizza to quesadillas.

The Chocolate Bar

This trendy and intimate space brews great coffee, serves breakfast and light lunches, and finishes it off with delicious desserts.

Groups can reserve one or more meeting rooms.

Kinkaid Brewing Co.

This restaurant fills a unique space that used to be a theater. Their menu and beers — brewed up in the Nebraska Sandhills — are equally as special as the ambience of their space. It offers a separate room with a patio for groups.

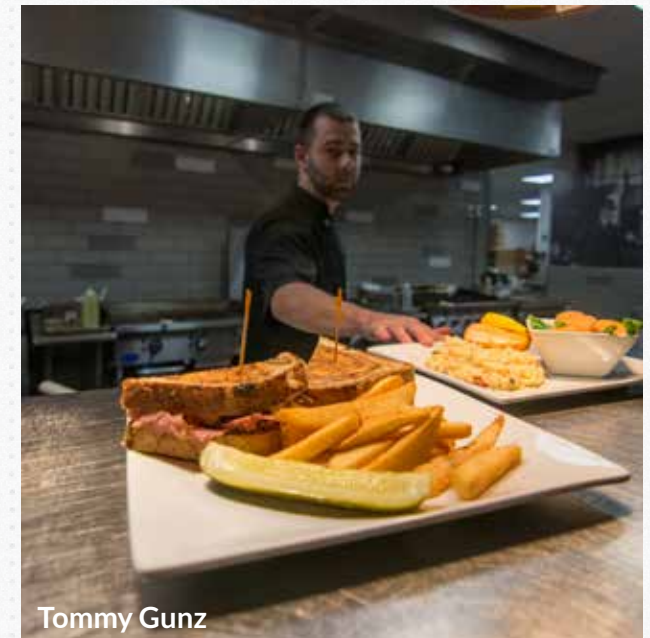
Napoli's

Incredible made-from-scratch meals featuring fare from southern Italy.

Tommy Gunz

This 1920s themed speakeasy boasts handcrafted drinks and scratch-made food. Enjoy a delicious burger or steak. Multiple meeting rooms are available for your group.

There are many more group dining options. Call Grand Island Tourism at 308-382-4400 for a full platter.



Tommy Gunz



Rodeo Grand Island



Raising Nebraska



Husker Harvest Days

Gateway to Nebraska Ag

Grand Island functions as the gateway to Nebraska Agriculture. We've already mentioned the state's largest agricultural event, the Nebraska State Fair, historical agriculture at Stuhr Museum, as well as the perennial thoroughbred horse races at Fonner Park. A bevy of other ag-related businesses and events round out the city's calendar and economy.

Our office can point you to area guide services allowing your group to get a tour of Nebraska agriculture given by Nebraska farmers and ranchers. Grand Island Tourism can also help line up step-on guides for your group.

Ag Tours

Farming and ranching is the lifeblood of central Nebraska. Our proud farmers and ranchers, as well as those in supportive industries, love to share their knowledge with others. Call 308-382-4400 to set up a tour of a working farm, ranch, or industrial operation.

Husker Harvest Days

Husker Harvest Days, the world's largest totally irrigated farm show, takes place at a permanent show site west of Grand Island. This three day show features the latest in agricultural technology.

Raising Nebraska

Raising Nebraska is a 25,000 square foot agricultural experience on the Fonner Park campus that shows visitors how the food grown in our state gets from the field to your pantry. Book an infusion class to try your hand adding flavors to spirits, coffee, cooking oils, or visit the gardens.

Rodeo Grand Island

Rodeo Grand Island is an annual, late winter, PRCA showcase of professional cowboys in the Heartland Events Center.



Little Adventures in our Big Backyard

Visit these nearby Nebraska communities to fill out your group itinerary.

Aurora/Central City *25 minutes east*

Plan on seeing the Edgerton Exploit Center and Plainsman Museum in Aurora (pop. 4,488), followed by dinner at Prairie Creek Vineyards in (Central City (pop. 2,903) for a New York Strip or gourmet mac & cheese.

Loup River Scenic Byway *90 minutes northwest*

This byway strikes out into the Nebraska Sandhills, an ecological gem covering 25% of Nebraska. On the drive visit Ord (pop. 2,103), home to Scratchtown Brewing Co. Continue on the byway for folks interested history with a stop at Fort Hartsuff before getting supper in Burwell (pop. 1,190) at the Pizza Palace.

Hastings *25 minutes south*

Hastings (pop. 24,989) Museum features natural and cultural displays as well as an Imax screen. Find quality food at The Odyssey and drink at Steeple Brewing Co.

St. Paul *25 minutes north*

St. Paul (pop. 2,290) features the Nebraska Major League Baseball Museum and Loup Rivers Distilling, followed by a good meal at the picturesque Miletta Vista Winery. Jog a few miles west and visit Sandhills Lavender Farm.

Corporate Tours

Some Grand Island businesses and organizations offer tours of their facilities. Grand Island is a center of industry and agriculture where businesses showcase American ingenuity and quality.



Sandhills Lavender Farm



Hastings Museum



Case New Holland plant

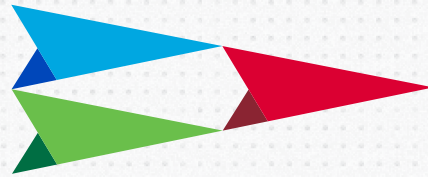
Hotel

Hotel	Cost	Rooms
Best Western Plus by Best Western 2707 S Locust St • 877-315-8273 BestWestern.com	\$\$\$\$	80
Boarders Inn & Suites by Cobblestone 3333 Ramada Rd • 308-384-5150 StayBoarders.com	\$\$\$	182
Candlewood Suites by IHG 859 Allen Dr • 308-381-7000 ihg.com/Candlewood	\$\$\$\$	88
Comfort Inn by Choice Hotels 3535 W State St • 308-381-7788 ComfortInn.com	\$\$\$	68
Comfort Suites by Choice Hotels 228 Lake St • 308-833-7100 ComfortInn.com	\$\$\$	79
Days Inn by Wyndham 2620 Diers Ave • 308-384-8624 WyndhamHotels.com/days-inn	\$\$\$	61
Days Inn by Wyndham 7838 S Hwy 281 • 866-384-5006 WyndhamHotels.com/days-inn	\$\$\$	47
Fairfield Inn & Suites by Marriott 805 Allen Dr • 308-381-8980 Marriott.com	\$\$\$\$	109
Grand Island Extended Stay Independent hotel 3021 S Locust St • 308-379-4078	\$	104
Hampton Inn by Hilton 504 N Diers Ave • 800-426-7866 GrandIsland.HamptonInn.com	\$\$\$\$	68
Holiday Inn Express & Suites by IHG 3404 W Faidley Ave • 308-675-1118 HIExpress.com	\$\$\$\$	80
Island Inn Independent hotel 2311 S Locust St • 308-382-1815 StayIslandInn.com	\$\$	44

Hotel

Hotel	Cost	Rooms
Mainstay Suites by Choice Hotels 3051 S Locust St • 308-646-2091 ChoiceHotels.com	\$\$\$	58
Motel 6 by The Blackstone Group 7301 Bosselman Ave • 308-384-6666 Motel6.com	\$\$	51
Quality Inn & Conference Center by Choice Hotels 7838 S Hwy 281 • 8308-384-7770 ChoiceHotels.com/quality-inn	\$\$\$	100
Ramada Midtown by Wyndham 2503 S Locust St • 308-384-1330 WyndhamHotels.com/ramada	\$\$\$	197
Relax Inn Independent hotel 507 West 2nd St • 308-384-1000	\$	28
Resident Suites Independent hotel 2114 W 2nd St • 308-384-2240	\$	96
Rodeway Inn by Choice Hotels 3205 S Locust St • 308-646-2090 RodewayInn.com	\$\$	60
Sleep Inn by Choice Hotels 1716 Diers Ave • 308-381-8111 SleepInn.com	\$\$\$	63
Suburban Extended Stay Hotel by Choice Hotels 7838 S Hwy 281 • 800-658-4092 ChoiceHotels.com/suburban	\$\$	49
Sure Stay Plus by Best Western 2603 S Locust St • 308-384-4380 BestWestern.com	\$\$	79
Travelodge by Wyndham 1311 S Locust St • 308-382-5003 Travelodge.com	\$\$	40
USA Inns of America Independent hotel 7501 S Hwy 281 • 308-381-0111 USAInnsOfAmericaDoniphan.com	\$	61





Grand Island Tourism

201 W Third St
Grand Island, NE 68801
VisitGrandIsland.com | 308-382-4400
sales@VisitGrandIsland.com