

Grand Island, Nebraska

# Group Tour Planner's Guide



**Bosselman Travel Center**  
3335 W Wood River Rd • 308-382-2288  
Truck stop with diesel and motorcoach service

## Airports

**Central Nebraska Regional Airport (GRI)**  
Grand Island • Flights to Dallas, Phoenix, and Las Vegas

**Kearney Regional Airport**  
(45 miles west) • Flights to Denver

**Lincoln Regional Airport**  
(90 miles east) • Flights to Chicago, Denver, and Houston

## Car Rentals

**Budget Rent-A-Car**  
3215 N Hwy 281 • 308-381-7100 • BudgetNebraska.com

**Enterprise Rent-A-Car**  
920 N Diers Ave • 308-381-6300 • Enterprise.com

**Hertz**  
Airport • 308-384-4741 • Hertz.com

**A & A Rent a Car**  
703 W 2nd • 308-384-3073 • MSASauto.com

**Thrifty Car Rental**  
Airport • 308-382-4392 • ThriftyNE.com

**Uber and Lyft**  
Check apps for availability

## Other Transportation

**Action Cab & Courier**  
212 E Capital Ave • 308-381-1010

**Arrow Stage Lines - charter only**  
1982 Metro St. • 308-382-3036

**B.I.G. Premier Limousine**  
NebraskaBigLimos.com • 308-383-3526

**Holiday Express Bus**  
2510 S North Rd • 308-384-1800  
Charter motorcoach, limousine and school bus

**CRANE Public Transit**  
308-646-0069  
Public shuttle service for Grand Island, Mon-Fri 6am-5:30pm, Sat 9am-3pm

# Discover Grand Island

as part of your group tour experience. We are excited for you to visit our city! Grand Island's attractions and events will keep you engaged throughout your entire stay.

## Transportation and Connectivity



### MILEAGE FROM GRAND ISLAND TO

Chicago, IL	599
Dallas, TX	636
Denver, CO	397
Kansas City, MO	287
St Paul, MN	446
Omaha, NE	145
St. Louis, MO	536





# Grand Island

Nebraska

**ARRIVE RAILSIDE**

The streets in Railside were originally planned to parallel the railroad tracks. As the city grew, planners decided new roads would point true north. City lot parking is free.

Map of Grand Island, Nebraska, showing major roads (281, 30, 34), parks (Fonner Park, Stalley Park), and landmarks (Stuhr Museum, Grand Island Regional Hospital).

**GRAND ISLAND I-80 EXIT 312**

Map showing the location of Grand Island relative to I-80 Exit 312 and the Platte River.

**We have audio equipment for tours!**

Gjerloff Prairie and education center



Raising Nebraska

VisitGrandIsland.com | 308-382-4400

# TOUR: Midwest Ag Showcase

Sample itinerary, with overnight in Grand Island

## Day 1

On this tour, you'll hear and see how science and technology have advanced modern agriculture, and impacted us in ways you might not have considered.

**Kinkaid Brewing Company**, 316 N. Pine, Grand Island  
Have dinner at Kinkaid's where the beautiful antique bar is the visual cornerstone of the restaurant. The menu is diverse, as is their own line of craft brews.

## Day 2

**Raising Nebraska**, 501 E. Fonner Park Road  
Start the day off with breakfast at Raising Nebraska operated by the University of Nebraska. There, you'll enjoy a farm to table meal and either hands-on activities or a garden tour (seasonal).  
Allow 2 hours

**Family Farm Experience**, Various sites are available in and around Grand Island

Your group will visit a family farm, see operations up close, and talk with the people who use science and technology in modern farming.  
Allow 1 hour

**Miletta Vista Winery**, 1732 Highway 281, St. Paul  
Take a short drive up to the edge of the Nebraska Sandhills with a visit to the most established vineyard and winery in the area. There you can sample wines and have lunch. A step-on guide may be added.  
Allow 1.5-2 hours

**AGI** (a global ag products company), 2928 US-30  
On this tour, you'll get a look into what it takes to produce one of the most iconic visual elements on a farm. AGI's Grand Island plant focuses on manufacturing grain bins and the mechanical elements that make them work.  
Allow 1 hour



Harvesting corn





Sandhill cranes



Crane Trust blind tours

## TOUR: Spring Migration

Sample itinerary, with overnight in Grand Island

The magnificence of sandhill crane migration can only be experienced here, in the central Platte River valley.

### Day 1

**Stuhr Museum**, 3133 W. U.S. Hwy 34

Start your migration experience with the Wings Over the Platte art exhibit and lunch at Stuhr Museum. While there, you can watch videos about the crane migration and take part in behind the scenes tours of the museum.

Allow 2-2.5 hours

### Driving Tour

Next, you'll hit the road with a local guide who will take you through areas where the sandhill cranes feed during the day. You may catch them dancing to impress their future mate or get a glimpse of an endangered whooping crane.

Allow 1 hour

**Crane Trust Nature and Visitor's Center**,  
9325 S Alda Rd, Wood River

At the Crane Trust, learn how conservation efforts help make this a preferred resting spot for the sandhill crane as well as the endangered whooping crane. At dusk, an up close view of the cranes will be the highlight of your visit. From viewing blinds on the river, you'll see and hear the birds fly in for their overnight stay. Warm clothes, binoculars and a camera should be on your packing list.

Allow 3-3.5 hours

**Kinkaider Brewing Company**, 316 N. Pine, Grand Island

The evening will be capped off with dinner at Kinkaider Brewing Company, located in a grand old bar. The locally brewed beer and delicious food will make for a great end to the day.

### Day 2

**The Chocolate Bar**, 116 W. 3rd St.

A local story teller, photographer or historian can join you for breakfast and one last experience before you set out for your next destination.

# TOUR: Art and Food

Sample itinerary, with overnight in Grand Island

On this tour, you get to try food and beverages, plus see various kinds of art at stops and along the journey.

## Day 1

**The Chocolate Bar**, 116 W. 3rd St.

Have a buffet style lunch, including dessert (of course), and hear from a local artist.

Allow 1- 1.5 hours

**Zabuni Specialty Coffee**, 220 N. Walnut St.

Zabuni connects Kenyan coffee farmers to roasters. This stop includes a coffee sampling as well as education and a warehouse tour.

Allow 1 hour

**Studio 10 Art Gallery**, 112 W. 3rd St.

Studio 10 is one of the longest serving galleries in the state. You'll meet the owner and learn how artists are selected.

Allow 30 minutes - 1 hour

**Big Red Treats**, 223 W 3rd St.

Popcorn is big business in Nebraska. While at Big Red Treats, sample different flavors and see the popping room.

Up to 1 hour

**Sculpture Walk**, Railside

Learn about a statewide initiative to bring art to downtown districts and see pieces selected for Grand Island's Sculpture Walk while listening to the artists talk about their work.

1-1.5 hours

**Fred's Flying Circus**, 503 E. 4th St.

Fred's Flying Circus is a whimsical, 3D art display viewed from across the street.

Allow 30 minutes (includes video on bus)

**Prairie Creek Vineyard and Winery**,

1600 16th St, Central City

You'll have supper at Prairie Creek's restaurant, where they can suggest the perfect wine pairing.

Allow 1.5-2 hours

## Day 2

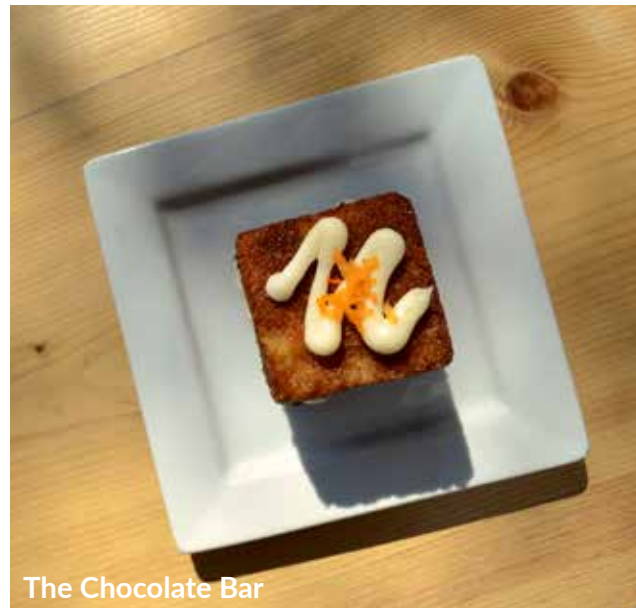
**Raising Nebraska**, 501 E. Fonner Park Rd.

Sample local sausage, bacon, eggs, honey, mushrooms or milk. Add an art element led by a local artist or one of the Raising Nebraska staff members.

Allow 1-1.5 hours



Zabuni Specialty Coffee



The Chocolate Bar



Fred's Flying Circus





The Liederkranz German Club



Stuhr Museum

## TOUR: Settlers, Saints, & Sinners

Sample itinerary, with overnight in Grand Island (schedule can be easily altered)

Tales from the plains include stories of bravery, intrigue and fortitude.

### Day 1

**Liederkranz**, 401 W. 1st St.

Step back in time when you visit the original German bar from the early 1900s, and the retro bowling alley. Have supper and get a historical tour, along with some interesting stories.

1.5 - 2 hours

**Stolley House**, 2103 W. Stolley Park Rd.

Visit the house where Grand Island's original settler raised a family and built the first school in the area.

Allow 1 hour

### Day 2

Breakfast at the hotel

**Burlington Station**, 603 N. Plum

In this restored train station, members of the Historical Society will share treats, and tell stories about the people who settled here and built a community.

Allow 1 hour

**Railside Tour**, 201 W. 3rd St.

Take a guided walking tour of historic downtown sites. Walk in the footsteps of those who visited and those who made this island on the prairie their home. The Railside district is on the National Register of Historic Places and sits on the Lincoln Highway.

Allow 1.5 - hours

**Chicken Coop**, 120 E. 3rd St.

Enjoy lunch in this historic building which serviced those who brought the rails through the region. Many saints and sinners passed through the doors which have been repurposed into the restaurant's booths.

Allow 1 hour

**Driving Tour with Step On Guide**

See the sites and hear the stories, as we cross the Lincoln Highway, Pawnee lands and the Oregon and Mormon Trails.

Allow 1 - 1.5 hours

**Stuhr Museum of the Prairie Pioneer**, 3133 W. Hwy 34

The museum's 200 acres include a town with a working planing mill, tinsmith and blacksmith shop. From late spring to early fall, the town is inhabited by historic interpreters. If time allows, we can add behind the scenes tours of the archive and vast collections building.

Allow 2 hours

# EVENT: The Sandhill Cranes

The middle of March is the usual peak of the sandhill crane migration, with bird counts tallying well more than 1.2 million cranes in the central Platte River valley. The first arrivals generally roost south of Grand Island and Alda, where scientists have documented *the World's largest roost* on Crane Trust property.

## Viewing blind tours *March only*

Viewing blind tours offer the chance to view cranes on the river at dawn or dusk. Participants will need to dress warmly and be able to hike up to half a mile on uneven trails to the blinds. Keep in mind the cranes are wildlife, and we can't guarantee what you will see.

## Footbridge tours *March only*

These evening tours are handicap accessible and from a bridge over a small channel of the Platte River.

## Nature Center tours year-round

These year-round tours can last one hour or more. Visitors will see the butterfly garden, art gallery, bison, and more.

9325 S Alda Rd (Interstate 80 exit 305)  
308-382-1820 • CraneTrust.org • info@CraneTrust.org



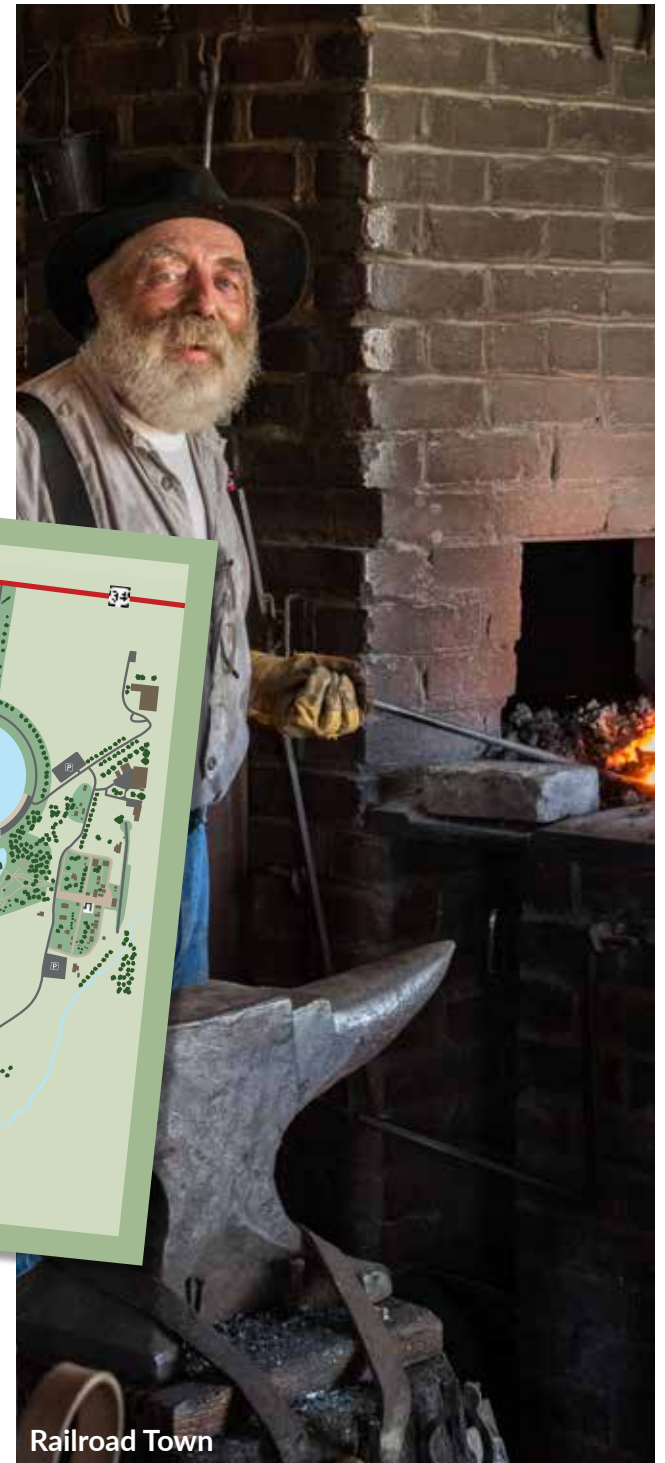
Sandhill cranes' spring migration

Crane Trust Nature Center, Platte River Photography





The Stuhr Building



Railroad Town

## PLACE: Stuhr Museum

Praised as the “best preserved pioneer town” (*True West*), Stuhr Museum tells the story of early pioneers settling on the plains. Its 200 acres offer spectacular architecture, and a recreated railroad town staffed by historic interpreters during the summer and holidays. You can also see Native American displays, vintage vehicles, and much more. Peek behind the curtain at their collections building and archives. Call for hours and admission, which vary with the season and special events.

### Railroad Town

This recreated pioneer community features working trades including a planing mill, blacksmith, and tinsmith. Businesses and homes are furnished to reflect the 1890s.

### The Stuhr Building

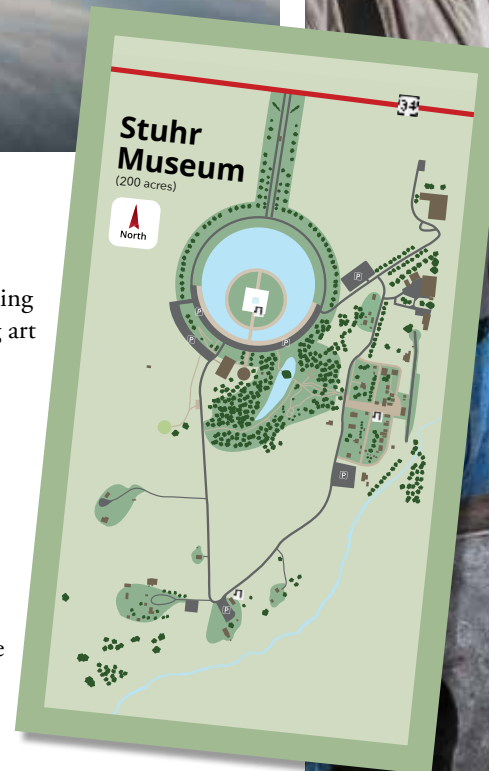
The Stuhr Building was designed by renowned architect Edward Durell Stone, known for designing Radio City Music Hall and the John F. Kennedy Center for the

Performing Arts. The Stuhr Building houses history displays, a rotating art gallery, and special exhibits.

### Fonner Rotunda

The Fonner Rotunda, designed like a wagon wheel with different spokes separating the exhibits, houses Native American and cowboy exhibits plus items from the Bartenbach Opera House. The beautiful Arrow Maker statue anchors this round structure.

3133 W Highway 34,  
Grand Island  
308-385-5316 • [StuhrMuseum.org](http://StuhrMuseum.org)  
• [info@StuhrMuseum.org](mailto:info@StuhrMuseum.org)



# PLACE: Historic Railside District

The Railside District, Grand Island's historic downtown, has experienced a renaissance over the past decade. Unique shopping, dining, and entertainment opportunities are all within a few block stroll when you're Railside.

## The Grand Theatre

Railside's lovingly restored movie house offers an experience you won't find at any modern cineplex for less than half the price. Films are shown Fri-Sun nights in the 1937 art-deco theater.

## Railside breweries

Prairie Pride and Kinkaidler brewing companies face each other in Railside. Prairie Pride brews on site and serves in their taproom. Kinkaidler offers a full restaurant and serves their namesake beers which are brewed 90 miles northwest in the Nebraska

Sandhills. The Chicken Coop, just around the corner, brews their own root beer and cream soda.

## Railside shopping

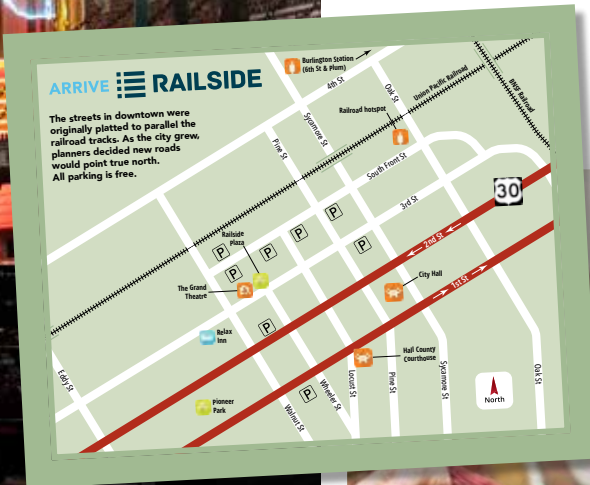
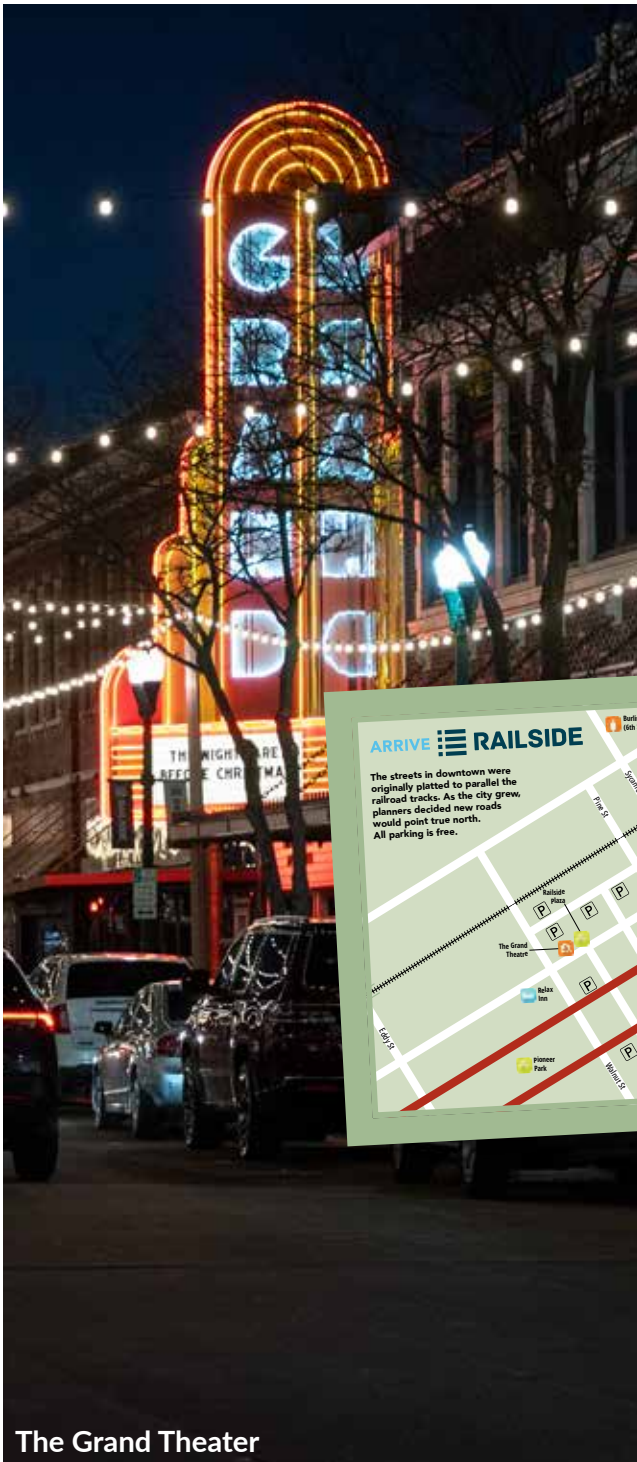
Railside has long been known for its antique stores. Recently, a number of independent specialty stores have opened in the district.

## Wings Across the Heartland

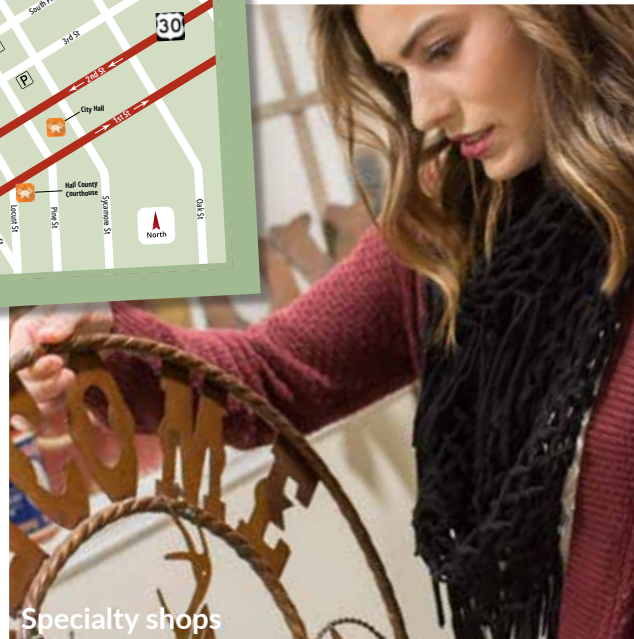
When you stroll Railside you'll see sculptures, murals, and the art that started it all, Wings Across the Heartland. These wings, painted in the alley ways, encourage people to interact with it by taking selfies.

201 W Third St, Grand Island  
308-398-7022 • ArriveRailside.com  
director@ArriveRailside.com

**ARRIVE RAILSIDE**



The Grand Theater



Specialty shops



Guided audio tours





Grand Island Casino (resort coming in 2025)



# PLACE: Fonner Park Campus

Fonner Park plays host to many events throughout the year that are primed to be a part of your tour, including concerts at the Heartland Events Center, the Grand Island Casino, the Nebraska State Fair, and thoroughbred horse racing. Contact Fonner Park to get information on events.

## Horse races

The 60+ year tradition continues in Grand Island when the gates open for thoroughbred horse racing every February through May. In the words of their CEO, “Every 22 minutes the place goes berserk!”

## Heartland Events Center

The events center features concerts, sure, but also offers a wide variety of other shows throughout the year including a circus, a rodeo, and monster trucks!

## Nebraska State Fair

Entertainment and animals. Concerts and street performers. Barbeque, animals, and foods on a stick. Cotton Candy and The Quilt Room. What are you waiting for?



700 E Stolley Park Rd, Grand Island  
308-382-4515 • [FonnerPark.com](http://FonnerPark.com) • [dwilley@FonnerPark.com](mailto:dwilley@FonnerPark.com)





# Restaurants for groups

Food is an important part of any vacation. A good meal can create an ultimately positive memory tied to an experience or place. Grand Island has dining experiences that can accommodate big groups while serving delicious foods in unique atmospheres.

## The Chicken Coop

A historic space offering local beer — they brew their own root beer — and great food from pizza to quesadillas.

## The Chocolate Bar

This trendy and intimate space brews great coffee, serves breakfast and light lunches, and finishes it off with delicious desserts. Groups can reserve one or more meeting rooms.

## Kinkaid Brewing Co.

This restaurant fills a unique space that used to be a theater. Their menu and beers — brewed up in the Nebraska Sandhills — are equally as special as the ambience of their space. It offers a separate room with a patio for groups.

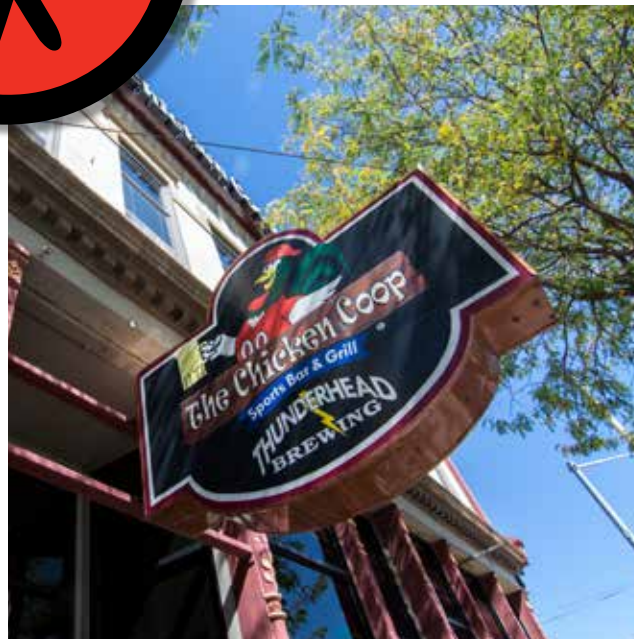
## Napoli's

Incredible made-from-scratch meals featuring fare from southern Italy.

## The Liederkranz

Ask for an old fashioned German or traditional American meal in this 150+ German Club. For something more unique, get a catered meal in the club's Brick Hall or grassy courtyard.

There are many more group dining options. Call Grand Island Tourism at 308-382-4400 for a full platter.

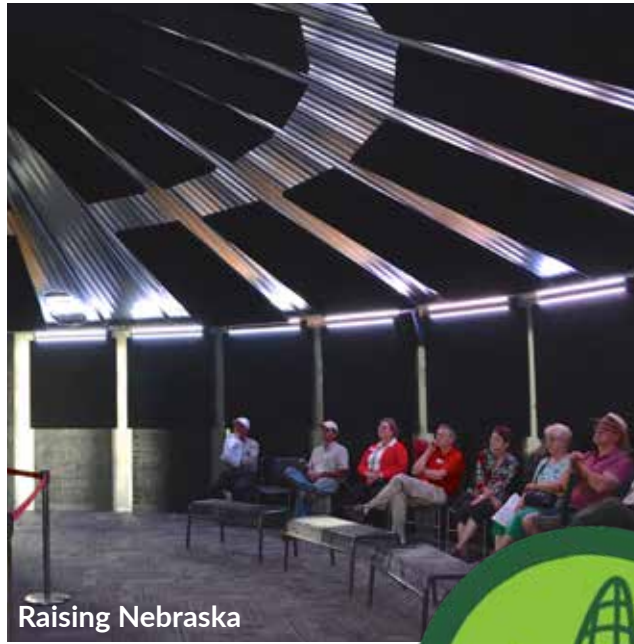


Liederkranz German Club





Rodeo Grand Island



Raising Nebraska



Husker Harvest Days

# Gateway to Nebraska Ag



Grand Island functions as the gateway to Nebraska Agriculture. We've already mentioned the state's largest agricultural event, the Nebraska State Fair, historical agriculture at Stuhr Museum, as well as the perennial thoroughbred horse races at Fonner Park. A bevy of other ag-related businesses and events round out the city's calendar and economy.

Our office can point you to area guide services allowing your group to get a tour of Nebraska agriculture given by Nebraska farmers and ranchers. Grand Island Tourism can also help line up step-on guides for your group.

## Ag Tours

Farming and ranching is the lifeblood of central Nebraska. Our proud farmers and ranchers, as well as those in supportive industries, love to share their knowledge with others. Call 308-382-4400 to set up a tour of a working farm, ranch, or industrial operation.

## Husker Harvest Days

Husker Harvest Days, the world's largest totally irrigated farm show, takes place at a permanent show site west of Grand Island. This three day show features the latest in agricultural technology.

## Raising Nebraska

Raising Nebraska is a 25,000 square foot agricultural experience on the Fonner Park campus that shows visitors how the food grown in our state gets from the field to your pantry. Book an infusion class to try your hand adding flavors to spirits, coffee, cooking oils, or visit the gardens.

## Rodeo Grand Island

Rodeo Grand Island is an annual, late winter, PRCA showcase of professional cowboys in the Heartland Events Center.



# Little Adventures in our Big Backyard

Visit these nearby Nebraska communities to fill out your group itinerary.

## **Aurora/Central City** *25 minutes east*

Plan on seeing the Edgerton Exploit Center and Plainsman Museum in Aurora (pop. 4,488), followed by dinner at Prairie Creek Vineyards in (Central City (pop. 2,903) for a New York Strip or gourmet mac & cheese.

## **Loup River Scenic Byway** *90 minutes northwest*

This byway strikes out into the Nebraska Sandhills, an ecological gem covering 25% of Nebraska. On the drive visit Ord (pop. 2,103), home to Scratchtown Brewing Co. Continue on the byway for folks interested in history with a stop at Fort Hartsuff before getting supper in Burwell (pop. 1,190) at the Pizza Palace.

## **Hastings** *25 minutes south*

Hastings (pop. 24,989) Museum features natural and cultural displays as well as an Imax screen. Find quality food at The Odyssey and English tea at What the Dickens?

## **St. Paul** *25 minutes north*

St. Paul (pop. 2,290) features the Nebraska Major League Baseball Museum and Loup Rivers Distilling, followed by a good meal at the picturesque Miletta Vista Winery. Drive a few miles west and visit Sandhills Lavender Farm.



Sandhills Lavender Farm



Hastings Museum



Miletta Vista Winery & restaurant



# Hotel

Cost Rooms

## Best Western Plus

by Best Western  
2707 S Locust St • 877-315-8273  
BestWestern.com

\$\$\$\$ 80

## Boarders Inn & Suites

by Cobblestone  
3333 Ramada Rd • 308-384-5150  
StayBoarders.com

\$\$\$ 182

## Candlewood Suites

by IHG  
859 Allen Dr • 308-381-7000  
ihg.com/Candlewood

\$\$\$\$ 88

## Comfort Inn

by Choice Hotels  
3535 W State St • 308-381-7788  
ComfortInn.com

\$\$\$ 68

## Comfort Suites

by Choice Hotels  
228 Lake St • 308-833-7100  
ComfortInn.com

\$\$\$ 79

## Days Inn

by Wyndham  
2620 Diers Ave • 308-384-8624  
WyndhamHotels.com/days-inn

\$\$\$ 61

## Days Inn

by Wyndham  
7838 S Hwy 281 • 866-384-5006  
WyndhamHotels.com/days-inn

\$\$\$ 47

## Fairfield Inn & Suites

by Marriott  
805 Allen Dr • 308-381-8980  
Marriott.com

\$\$\$\$ 109

## Grand Island Extended Stay

Independent hotel  
3021 S Locust St • 308-379-4078

\$ 104

## Hampton Inn

by Hilton  
504 N Diers Ave • 800-426-7866  
GrandIsland.HamptonInn.com

\$\$\$\$ 68

## Holiday Inn Express & Suites

by IHG  
3404 W Faidley Ave • 308-675-1118  
HIExpress.com

\$\$\$\$ 80

## Island Inn

Independent hotel  
2311 S Locust St • 308-382-1815  
StayIslandInn.com

\$\$ 44

# Hotel

Cost Rooms

## Mainstay Suites

by Choice Hotels  
3051 S Locust St • 308-646-2091  
ChoiceHotels.com

\$\$\$ 58

## Motel 6

by The Blackstone Group  
7301 Bosselman Ave • 308-384-6666  
Motel6.com

\$\$ 51

## Quality Inn & Conference Center

by Choice Hotels  
7838 S Hwy 281 • 8308-384-7770  
ChoiceHotels.com/quality-inn

\$\$\$ 100

## Ramada Midtown

by Wyndham  
2503 S Locust St • 308-384-1330  
WyndhamHotels.com/ramada

\$\$\$ 197

## Relax Inn

Independent hotel  
507 West 2nd St • 308-384-1000

\$ 28

## Resident Suites

Independent hotel  
2114 W 2nd St • 308-384-2240

\$ 96

## Rodeway Inn

by Choice Hotels  
3205 S Locust St • 308-646-2090  
RodewayInn.com

\$\$ 60

## Sleep Inn

by Choice Hotels  
1716 Diers Ave • 308-381-8111  
SleepInn.com

\$\$\$ 63

## Suburban Extended Stay Hotel

by Choice Hotels  
7838 S Hwy 281 • 800-658-4092  
ChoiceHotels.com/suburban

\$\$ 49

## Sure Stay Plus

by Best Western  
2603 S Locust St • 308-384-4380  
BestWestern.com

\$\$ 79

## Travelodge

by Wyndham  
1311 S Locust St • 308-382-5003  
Travelodge.com

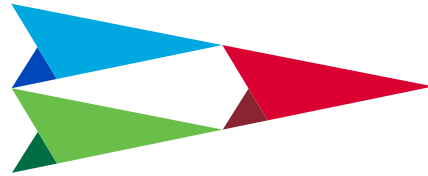
\$\$ 40

## USA Inns of America

Independent hotel  
7501 S Hwy 281 • 308-381-0111  
USAInnsOfAmericaDoniphan.com

\$ 61





# Grand Island Tourism

201 W Third St  
Grand Island, NE 68801  
VisitGrandIsland.com | 308-382-4400  
sales@VisitGrandIsland.com